

ABSTRACT NATIONAL EXHIBITION

JULY 8 - AUGUST 7, 2016



Darryl Halbrooks, *Transit of Magrathea* (detail) | First Place - Mary R. Koch Memorial Award

WELCOME to the inaugural Abstract National Exhibition, our first as Mark Arts. Our new identity emphasizes the signature style — the mark — that all artists must develop. We challenge each of you to look for the artists' marks as you take in this show.



Abstraction emerged as a powerful movement in the 20th century and continues to grow in popularity. Here in our own school, we have a robust abstract painting program led by acclaimed instructors Doug Billings, James Gross, Matthew Hilyard and Brian Hinkle, who have shown in numerous national and international juried exhibitions.

For this reason, we are particularly eager for the opportunity this exhibition presents to inspire our students. This show will help them and all of us as art appreciators to broaden our own creativity and enrich our learning experience.

Thanks for helping us inspire the artist in each of us!

A handwritten signature in cursive script that reads "Katy Dorrah".

KATY DORRAH
Executive Director

BOARD OF TRUSTEES

Karla Fazio, Board President
Janice Van Sickle, Vice President
William Tinker, Jr., Treasurer
Susan Addington, Secretary
Becky S. Turner, Past President
Brandon Baker
David E. Bengtson
Chris Brunner
Rebecca Bunting
Shannan Devlin
Dr. Milt Dougherty

Mark Eaton
Dr. Vincent Farha
Kathy Galichia
Helen Galloway
Polly Gentry
Angel Gomez
Kathy Knorr
Annie Koch
Marianne Misko
Priscilla O'Shaughnessy
Traci Pickert

Doug Pringle
Terry Richards
Dot Shannon
Paula Varner
Christine Voncannon, ex-officio

Honorary Trustees:
Liz Koch
Paula Varner
Carol Wilson

MISSION

The mission of Mark Arts is to be a vibrant arts hub in Wichita and the region by providing opportunities to appreciate and create art in an atmosphere of lifelong learning.

SPONSORS

THIS EXHIBITION IS GENEROUSLY UNDERWRITTEN BY



Additional support for educational programming and the opening reception was provided by the Victor Murdock Fund at the Wichita Community Foundation.

AWARD WINNERS

FIRST PLACE MARY R. KOCH MEMORIAL AWARD – \$1,000

Transit of Magrathea by Darryl Halbrooks of Richmond, KY

SECOND PLACE – \$750

Organometric #2 by Michael Florian Jilg of Hays, KS

THIRD PLACE – \$500

Path to Transformation by Sylvie van Helden of Baltimore, MD

HONORABLE MENTION – \$100

Untitled #1273 by Frank Hoeffler of Germantown, WI

Glacial Moment by Karen Kunc of Avoca, NE

Zig Zag Zig 89 by Thomas Nawrocki of Columbus, MS

Sequence #16 by Tom Stephens of Greeley, CO

JUROR

SANDRA DURAN WILSON

The works of abstract art in this premier exhibition may appear very contemporary, but they have their roots deeply grounded in art history. For this first Abstract National Exhibition, I selected works that embrace various voices from history that have shaped what we see today. The goal of art was initially to mimic reality. The more accurate the representation, the more it was valued. But, even with realism, there was abstraction. We look with our eyes, yet we transfer the three-dimensional vision onto a two-dimensional plane. Art genres follow scientific developments, so when chemistry led to the creation of paints that could be taken outside the studio, a new way of seeing light was born. Artists began to use paint to depict this quality of the light, and the early movement of Impressionism was born. When psychoanalysis led to the exploration of emotions and introspection, we saw the beginnings of Expressionism. As painters experimented with brush strokes and materials to convey their emotions, Abstract Expressionism was born. Early 20th century scientific developments and global cultural influences brought rapid changes to society and gave rise to unique and multiple perspectives. Cubism, Futurism and many other "isms" were making themselves known as a result.

Abstract Expressionism is based on experimentation with materials and the artist's interactions with the surface. Many people equate all abstract painting with Abstract Expressionism, but you can see the history and the journey we have taken to arrive in this moment. The art cycles continue with pop art, conceptual, minimalism and performance art. Expression continues to be influenced by science and technology. Today we live in a digital age with instant answers and interconnectivity. As artists, we do not create in isolation even if we spend long hours alone in the studio. We have constant access to visual information, from early cave drawings to Hubble space images. We are always influenced. The beauty of abstract art is how each artist chooses how and what to express.

What are you looking at? What does it mean? How do you enter the painting? How do you relate to it?

Use history to lead you to a place of beginning. See if you can sense the inspiration behind the piece. Is the piece speaking to you emotionally, texturally or does it spark an image that has meaning only to you? Abstraction exists along a continuum. I have selected examples of abstract art that are derived from this history. You may see figurative, still life, landscape, architecture and nonobjective elements expressed in varied materials. This is the world of abstract art.

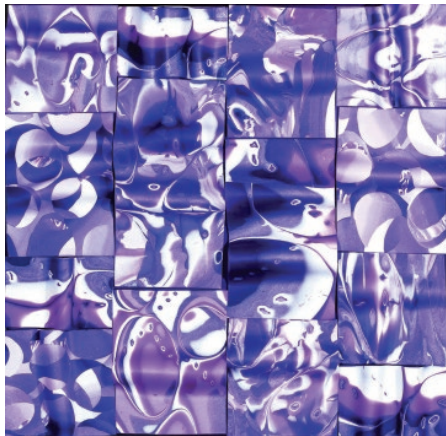


Sandra Duran Wilson of Santa Fe, New Mexico, is an award-winning artist whose work is found in private, corporate and civic collections across North America, Europe and Australia. She is represented in galleries in the United States and Australia. Wilson is a trained printmaker and painter and has been teaching for more than 15 years. She has a bachelor's of fine arts and a bachelor's of science from the University of New Mexico. She is the author of five art technique books and has created several DVDs. Wilson's monthly column, "Special Effects," runs in Cloth Paper Scissors magazine.

EXHIBITING ARTISTS



FRAN ABRAMS Rockville, MD
Red Squared \$425



FRAN ABRAMS Rockville, MD
When I Am An Old Woman \$550



KIRBY ATTWELL Houston, TX
Slot Canyon Light #4 \$3,000



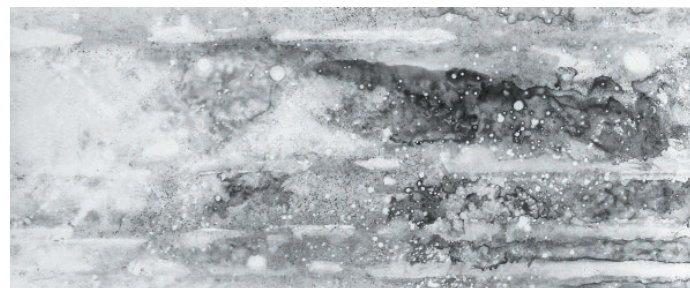
JANET BAILEY Topeka, KS
Star Gazing \$989



AMANDA ANDRADE Columbia, MO
Mixed Media \$5,000



ALEXANDRIA ARCENAU Emporia, KS
Dissimulation \$800



HALEY BIERE Owensville, MO
Untitled \$70



DENISE ATHANAS Mt. Pleasant, SC
Design in Yellow \$4,200



DENISE ATHANAS Mt. Pleasant, SC
Within Bounds III \$3,800



DOUG BILLINGS Wichita, KS
Blue Cloud \$375

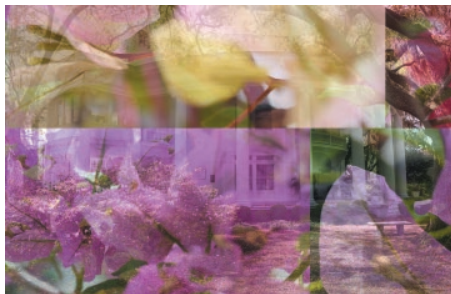


PAM BJORK Wichita, KS
Twentyfour \$400

EXHIBITING ARTISTS



MARIAH BRANINE Wichita, KS
Dark Horses \$400



TOMMY J. CRANE Valdosta, GA
Pretty in Pink \$100



GAIL DELGER McKinney, TX
Escape Route \$2,000



GAYLE FAULKNER Overland Park, KS
Seasons \$1,000



MICHAEL GILES Knoxville, TN
She Began to Make Mistakes, She Stumbled, She Ascended to Heaven \$2,000



CATHY GOODALE Estes Park, CO
Ghost Ride \$2,400



FIRST PLACE

DARRYL HALBROOKS Richmond, KY
Transit of Magrathea \$1,000



DARRYL HALBROOKS Richmond, KY
Battle of San Bernadino \$1,000



RALPH HANGGI Deer River, MN
BAV-014-T-1B \$3,000



RALPH HANGGI Deer River, MN
BAV-016-T-BOC \$3,000



BARBARA HAYNES Wichita, KS
Promise of a New Day \$375



BRIAN HINKLE Wichita, KS
Vessels #8 \$4,995

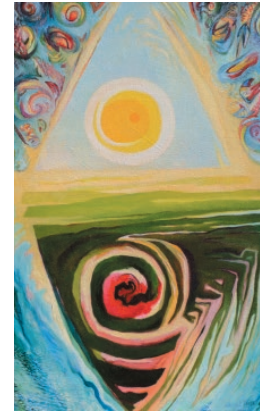
EXHIBITING ARTISTS



FRANK HOFFLER Germantown, WI
Untitled #1273 \$800



FRANK HOFFLER Germantown, WI
Untitled #1285 \$800



LAURALI IMEL Prairie Village, KS
Pen In Suu La! \$980



MICHAEL FLORIAN JILG Hays, KS
Homage to Stanton \$4,200



STEPHANIE HOLZNECHT Janesville, WI
Enchanted Sunlight \$2,450



STEPHANIE HOLZNECHT Janesville, WI
GPS Malfunction \$775



MICHAEL FLORIAN JILG Hays, KS
Organometric #2 \$3,200



ANN TYGETT JONES St. Louis, MO
I'll Take it Under Consideration Canvas 3 \$750



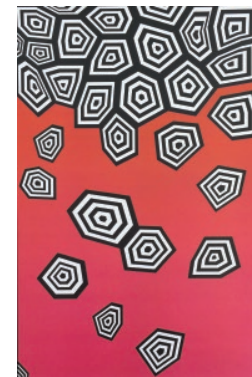
BRIAN HUBER Sausalito, CA
Meltwater \$2,275



CURT HUTCHENS Valley Center, KS
The Doctor Is In \$500



JEAN JUDD Cushing, WI
Rusted Lace #4 \$5,100



FREYA KISTNER Huntingdon Valley, PA
Hexagons \$100

EXHIBITING ARTISTS



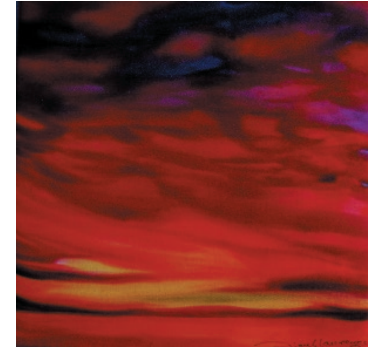
NYKOLI KOSLOW Milwaukee, WI
Meng / Youthful Folly \$150



NYKOLI KOSLOW Milwaukee, WI
Kou / Coming to Meet \$150



ALEXIS LAVINE Greensboro, NC
Fortified \$475



DIANE L. LAWRENCE Berryton, KS
Fire in the Sky \$300



RANDALL KRONBLAD Bella Vista, AR
Connecting Flights \$950



KAREN KUNC Avoca, NE
Glacial Moment \$800

HONORABLE MENTION



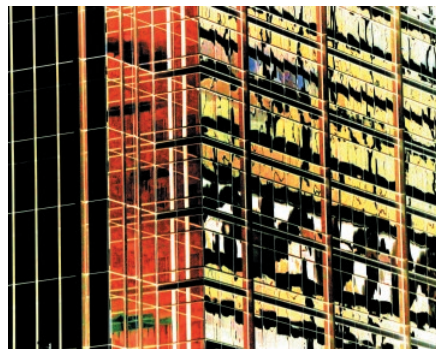
DIANE L. LAWRENCE Berryton, KS
Dance With Blue Koi \$950



LISA MANN Hancock, NH
Seussland in Scotland \$1,250



KAREN KUNC Avoca, NE
Fireformed, River Washed \$2,300



GUNTIS LAUZUMS Belgium, WI
Reflections \$600



TERRY MAXWELL Emporia, KS
Aviana \$1,250

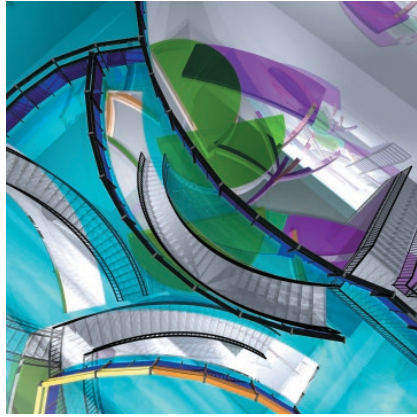


TERRY MAXWELL Emporia, KS
Firestorm \$1,250

EXHIBITING ARTISTS



MALLORY MEDVENE Wichita, KS
Riverside Dreaming \$200



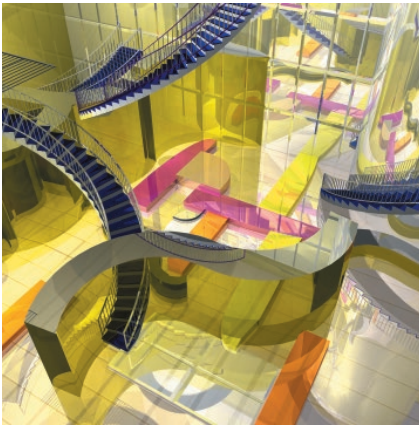
SELENA NAWROCKI Valdosta, GA
Velocity Square \$300



CHER HELLER OLSON Council Grove, KS
Wiper Wonder \$700



CHARLOTTE PATTERSON Kechi, KS
Untitled \$900



SELENA NAWROCKI Valdosta, GA
Rotary Steps Square \$300



THOMAS NAWROCKI Columbus, MS
Zig Zag Zig 33 \$1,000



BOB REGIER North Newton, KS
Blue Domain \$600



JIM RIGG West Palm Beach, FL
Firestorm \$2,600



THOMAS NAWROCKI Columbus, MS
Zig Zag Zig 89 \$1,000

HONORABLE MENTION



BARBARA NIEWALD Wichita, KS
Fresh Splash \$500



JANICE ROCKWELL Macomb, IL
Epiphany \$825



MARIA RYAN Colorado Springs, CO
Symphony in Blue \$3,500

EXHIBITING ARTISTS



CLINT SAMPLES Villa Rica, GA
Landscape Study #2 \$650



HOLLEY SCHMIDLAPP Wichita, KS
Aqua Marine Wash \$375



COLETTE ODYA SMITH Wauwatosa, WI
Forward Edge \$2,000



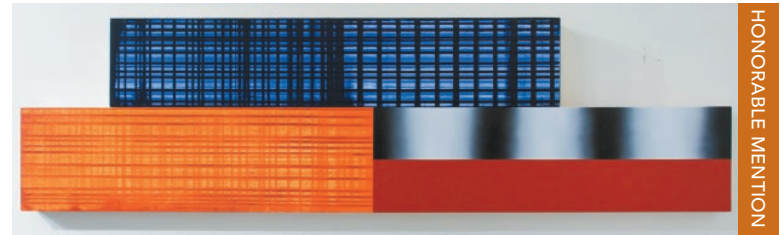
MERRILL STEIGER New York, NY
Channeling EM \$40,000



KATHLEEN SCHROEDER Canton, KS
Lost in Space \$250



CAROLYN SEATON Winfield, KS
Tied Down \$225



TOM STEPHENS Greeley, CO
Sequence #16 \$1,200



KATHLEEN SHANAHAN Wichita, KS
Torii \$450



KATHLEEN SHANAHAN Wichita, KS
Torii: Samovar Landing \$450



COLETTE ODYA SMITH Wauwatosa, WI
The Long Nowhere \$2,800



NANCY TEAGUE Lincoln, NE
Refreshed \$650



KENT THOMPSON Osborne, KS
Too Indecisive #3 \$500

EXHIBITING ARTISTS



BRIAN TRUESDALE Frederick, MD
Obscure Desire \$2,500



SYLVIE VAN HELDEN Baltimore, MD
Koi Origami \$1,600



SYLVIE VAN HELDEN Baltimore, MD
Path to Transformation \$1,600



PAUL WANER Wichita, KS
Tetra \$4,000



CHRIS WAROT Aurora, CO
On The Move \$600



QIONGHUI ZOU Topeka, KS
Cicadas' Language \$6,666

UPCOMING EVENTS

FRANK LLOYD WRIGHT STUDY CENTER LEGO EXHIBITION

May 20 - August 7

SMALL OIL NATIONAL EXHIBITION

August 26 - September 25

VERSUS: A LIVE ART BATTLE

September 23

FACULTY EXHIBITION

October 4 - 23

ART AUCTION

October 19 - 22

HOLIDAY TABLES

November 2 - 5

KANSAS WATERCOLOR SOCIETY NATIONAL EXHIBITION

November 18 - December 30

PRIVATE PARTIES AND RENTALS

Mark Arts continues to be a desirable location for rentals. Private painting parties are popular among groups of friends, for youth birthdays and as corporate events.





9112 E. Central | Wichita, KS 67206 | 316.634.2787 | MarkArtsKS.com

Formerly The Wichita Center for the Arts

© 2016 Mark Arts - All Rights Reserved